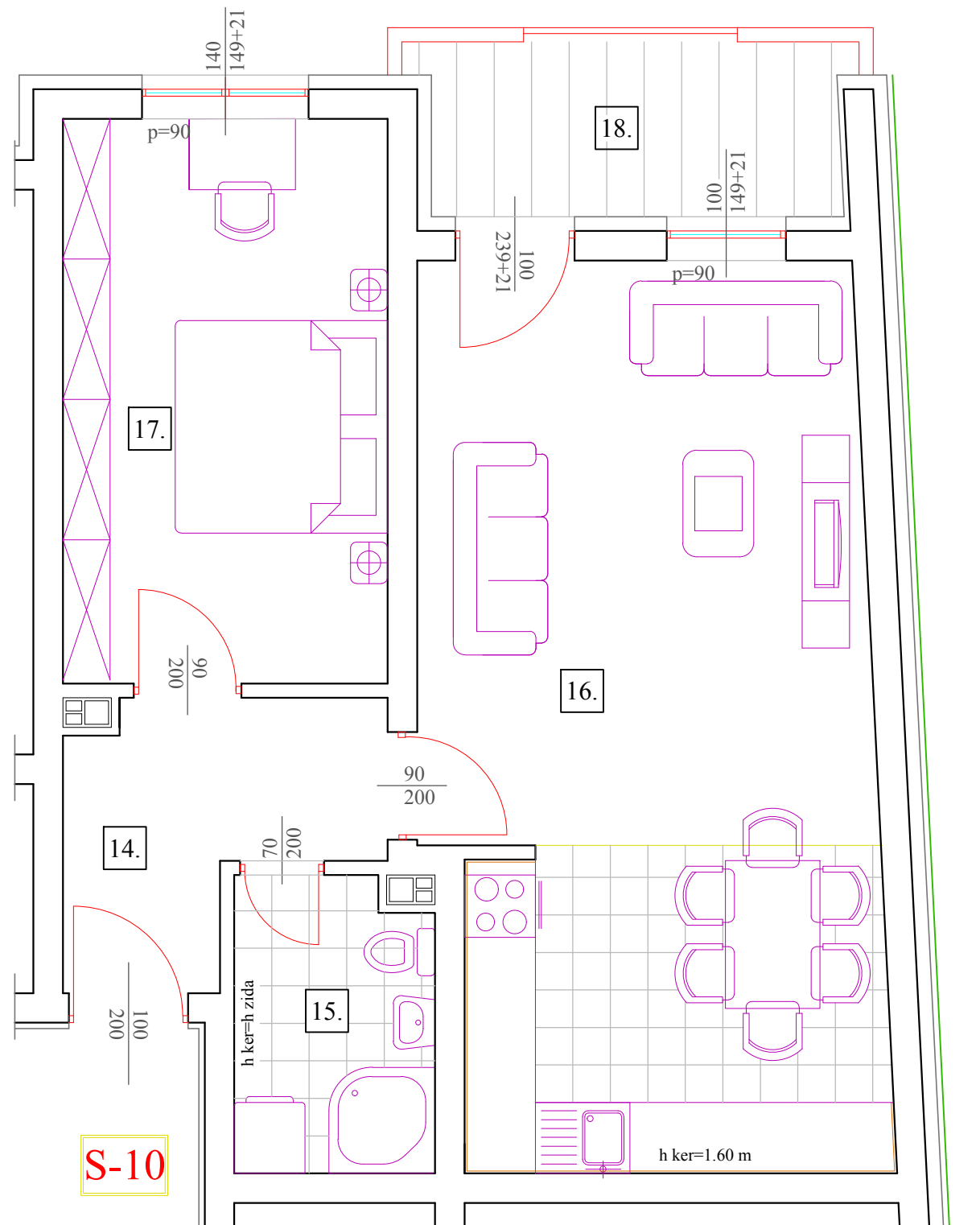


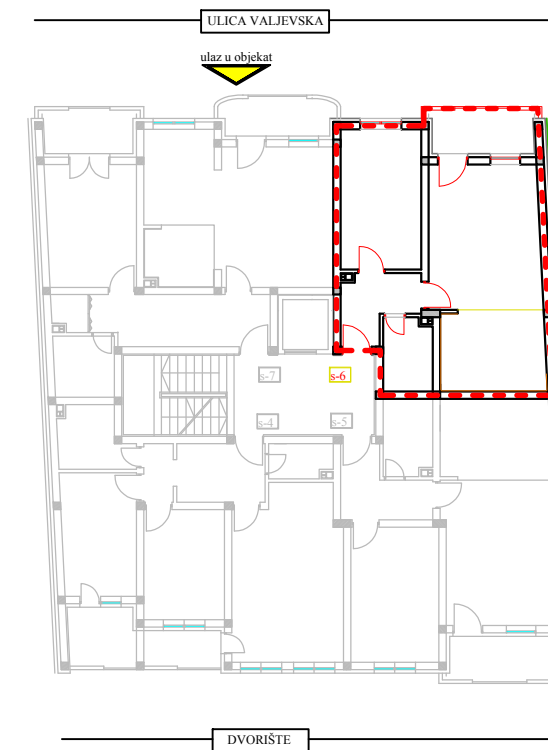
# VIŠEPORODIČNA STAMBENA ZGRADA, VALJEVSKA BROJ 39, SOMBOR



**S-10**



Dispozicija stana na etaži



II sprat

S10 - Dvosoban stan

|     |                |                 |                        |                       |
|-----|----------------|-----------------|------------------------|-----------------------|
| 14. | Hodnik         | parket          | P= 5.13m <sup>2</sup>  | O=10.5m <sup>1</sup>  |
| 15. | Kupatilo       | keramika        | P= 4.13m <sup>2</sup>  | O= 8.45m <sup>1</sup> |
| 16. | Dnevni boravak | keramika/parket | P= 28.73m <sup>2</sup> | O=24.4m <sup>1</sup>  |
| 17. | Soba           | parket          | P= 13.14m <sup>2</sup> | O=15.06m <sup>1</sup> |
| 18. | Terasa         | keramika        | P= 5.36m <sup>2</sup>  | O=10.9m <sup>1</sup>  |

NETO POVRŠINA STANA S10 P= 51.13m<sup>2</sup> + 5.36 m<sup>2</sup>=56.49m<sup>2</sup>

REDUKOVANA POVRŠINA STANA S10 P= 49.59m<sup>2</sup> + 5.19 m<sup>2</sup>=54.78 m<sup>2</sup>

"SOMBOELEKTRO" d.o.o. SOMBOR  
 Sombor, Adi Endrea broj 27  
 kontakt: 025/46-46-46  
 www.somborelektro.rs  
 mail: office@somborelektro.rs